

Feilden+Mawson

30 Years in Cambridge

Science+Health



Feilden+Mawson

Over the last three decades, our work in science and health has been shaped by a commitment to innovation, collaboration, and adaptability. The projects that follow reflect a diverse portfolio that supports discovery, wellbeing, and technological advancement

Each scheme responds to the evolving needs of scientific communities, balancing highly technical requirements with flexible, people-focused environments. Together, they demonstrate our ability to create spaces that enable pioneering work while enhancing the everyday experience of those who use them.

Vitrum

St John's Innovation Park

The new building on the Vitrum site includes CL2 laboratory space, a tenant amenity zone with reception, showers, amenities, and a flexible lounge and cafe area.

There is a flexible space for a fitness centre, meeting rooms, a conference space, outdoor roof terraces, and basement parking with EV charging points.





Centre for Cancer Drugs Discovery Sutton

CCDD provides multidisciplinary laboratory and research space, collaborative working environments and supporting services for the Institute of Cancer Research's Sutton Campus.

The five-storey building strategically provides two floors of Chemistry laboratories with over 70 fume cupboards and two floors of Biology laboratories for a medical trials team.

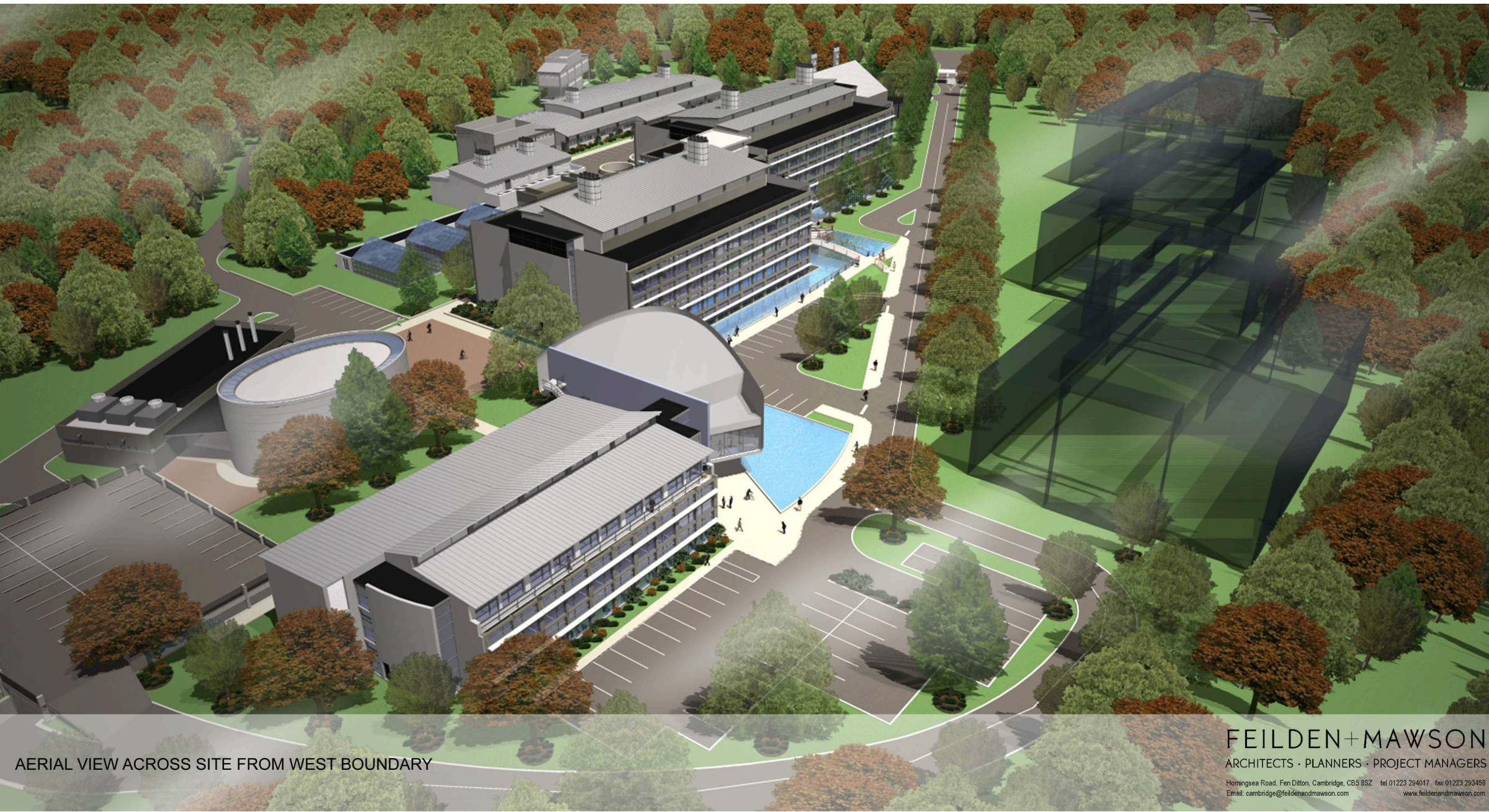


The Illumina Centre Granta Park

The Illumina Centre is a three storey building providing state-of-the-art facilities for the European Headquarters of Illumina, a world leader in Genomic Analysis and Diagnostics.

Long-term flexibility was a key design driver, with open-plan office space designed for future conversion into specialist laboratories. Two splayed wings are linked by bridges that frame views across the landscaped site, while a winter garden forms the building's central focal point.





National Bio Research Institute Beijing

F+M developed a winning masterplan for Beijing's National Institute of Fundamental Sciences, consisting of a number of research and administration buildings on an 8.9 hectare green field site in the Zhang Guan Cun Life Sciences Park.

Peptide Research Laboratory Peterhouse Technology Park

Sited on the outskirts of Cambridge, the Peptide Research Laboratory building accommodates two floors of chemistry and biochemistry research space, with the structural model selected to provide spacious and flexible open-plan laboratories.

This was the first truly flexible and adaptable privately funded development which was fitted out to the bespoke requirement of the tenant.



Feilden+Mawson

Maju Medical Campus Sungai Patani, Kedah State

The Maju Medical Campus is a centre of medical excellence in South East Asia. F+M provided a feasibility study and masterplan for this 750-student medical school and research institute, with full social, residential and sports facilities, as well as a hotel and conference centre.

