

# Feilden+Mawson

## 30 Years in Cambridge

### Residential



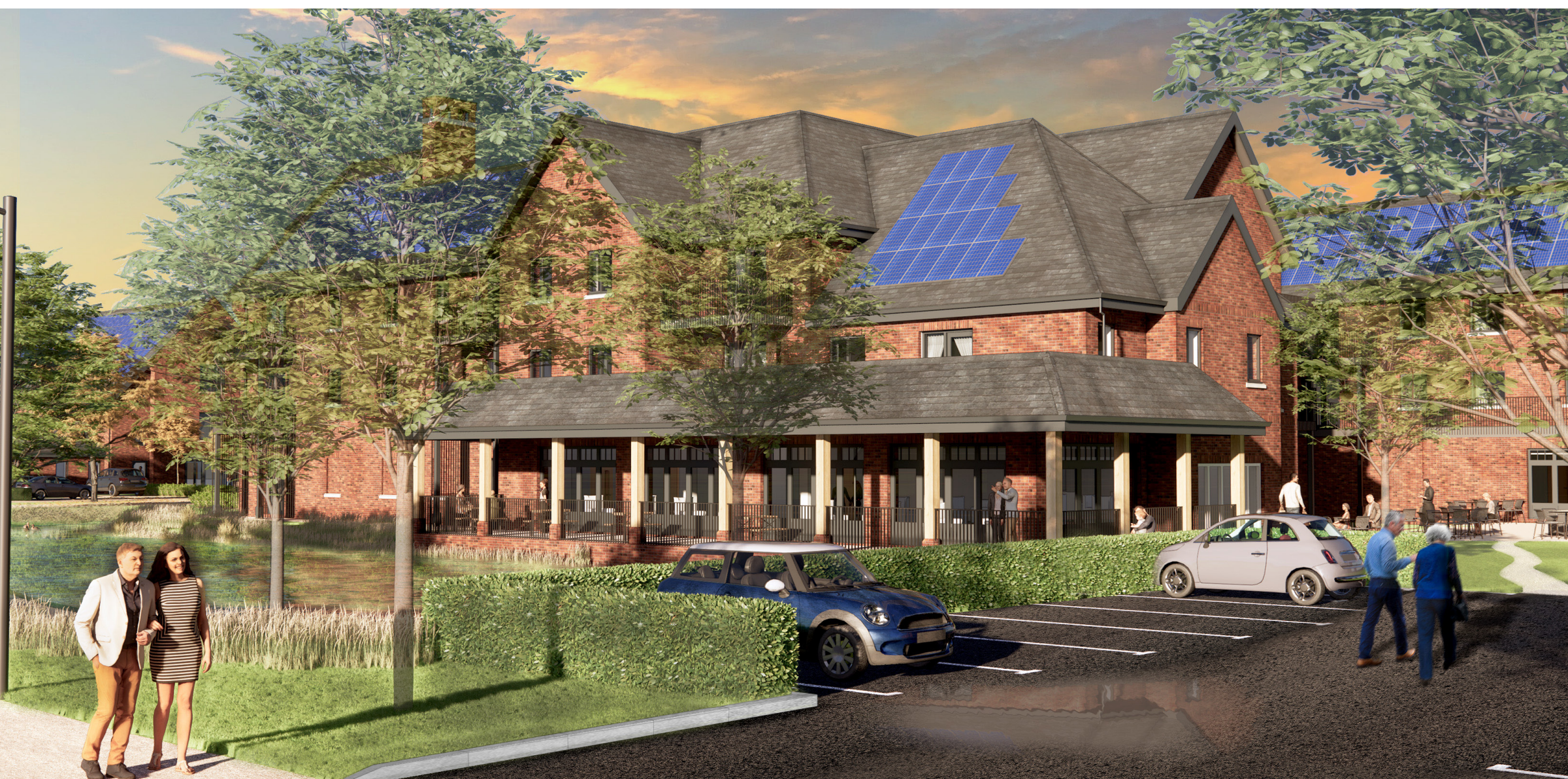
# Feilden+Mawson

For over three decades, we have delivered residential projects defined by quality, lasting value, and a sensitive approach to design. The projects that follow reflect a diverse portfolio spanning heritage conservation, contemporary housing, and large-scale urban developments, united by a clear focus on creating meaningful places to live.

Each scheme responds carefully to its context and community, balancing architectural ambition with practicality, sustainability, and care for the existing fabric. Together, they demonstrate our ability to design homes and neighbourhoods that support modern living – places that are considered, enduring, and appropriate to their setting.

## Castlemeadow Care Village

Feilden+Mawson were the Lead Designer for a development of 100 luxury retirement apartments in Attleborough, with associated care and communal facilities including a restaurant and residential care home and featuring spacious, accessible accommodation, large courtyard gardens and planting beds.



# Feilden+Mawson

## Lanham Barn

The barn situated in Onslow Green Essex, was originally used for storage and is set within the cartilage of an existing Grade II listed home.

On behalf of our client, we obtained planning permission and listed building consent to convert the barn into a new family home, and as part of that extend it with a contemporary addition.

Designed to pay homage to the barns original form in shape and material, but with a modern twist of a single slot skylight to the roof ridge.

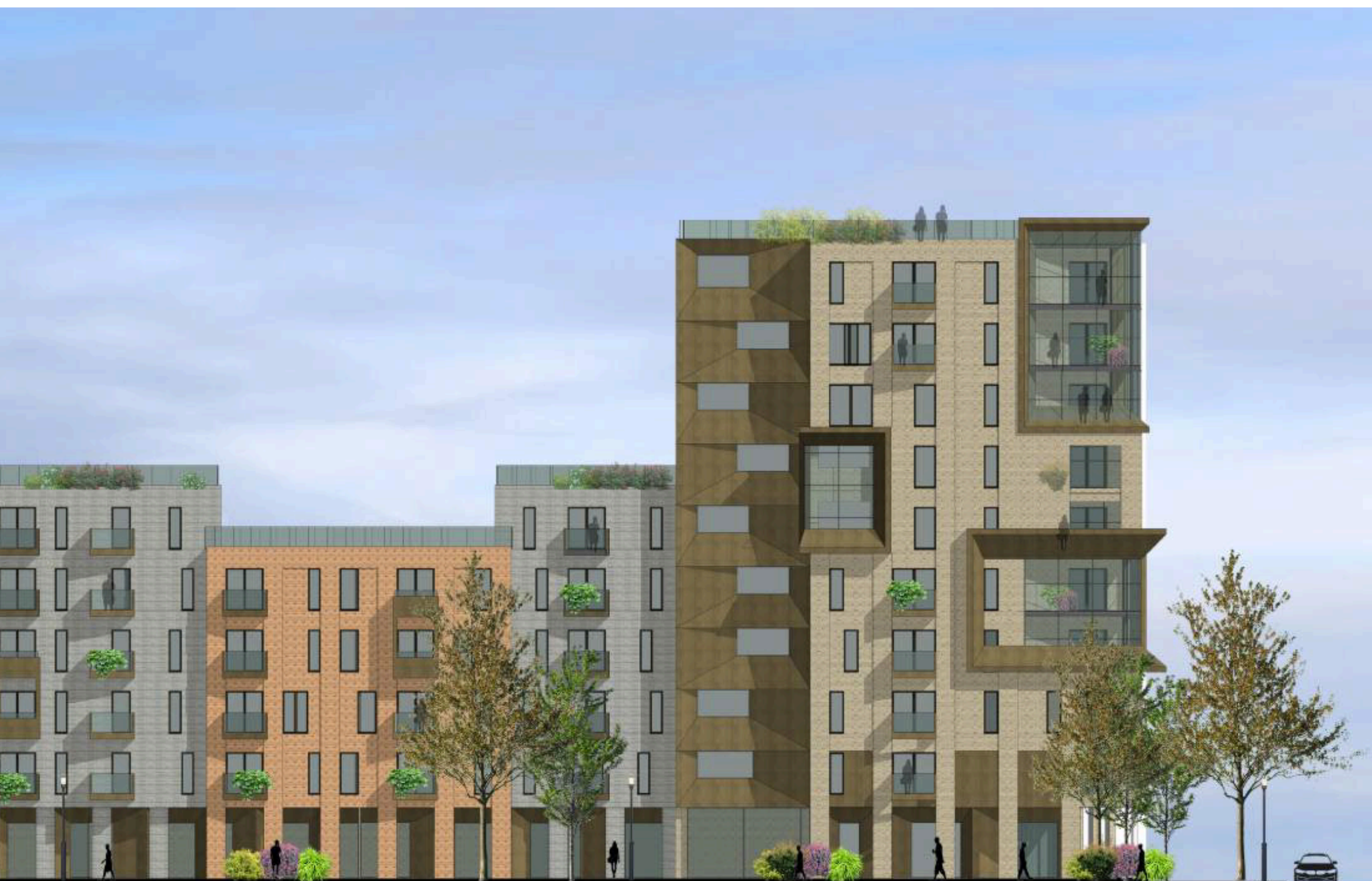


# Feilden+Mawson

## Severn Place

Feilden+Mawson were appointed as Architects to redesign a previously consented proposal and to deliver this urban housing scheme in the heart of Cambridge.

This 11,150m<sup>2</sup> large urban development included a Build-to-Rent scheme with 154 homes, public realm, commercial space and basement parking, set within eight blocks of varying heights.



# Feilden+Mawson



## Merchant Taylors Almshouses

Feilden+Mawson were appointed as Conservation Architects to refurbish the 19th century Grade II Listed almshouses and design new adjoining houses. The original units were joined together in sets of twos to form 19 new units, providing the requisite space for family life. All houses were also provided with rear courtyard gardens.

The new build houses were sympathetically inserted into the site so as not to impact the trees and parkland setting, which is vital to the character of the area.



# Feilden+Mawson

## Place House

Place House is a Grade II Listed private dwelling, parts of which date back to the 16th Century.

Feilden+Mawson were involved in the general refurbishment of the building in its setting, the repair of historic fabric and the removal of unsympathetic 20th Century additions.

As part of the work, conservation and repair to the historic south wing was carried out, a new kitchen area suitable for contemporary family living was created, and alterations were made to the 1920's wing.



# Feilden+Mawson

## End House

End House is a Grade II Listed building designed by Mackay Baillie Scott, who was a leading Architect in the Arts and Crafts Movement, for the then Master of Gonville and Caius College.

Feilden+Mawson were involved in returning the building to a single dwelling, with comprehensive refurbishment, new services, a complete insulative upgrade, extensive new fit-out, and a garden room extension in a deliberately contrasting idiom with appropriate interior design and furnishing.



# Feilden+Mawson

## Middlefield

Feilden+Mawson were appointed to work on the renovation and alteration of Middlefield House, which was built in 1908 for a university tutor who taught a relative of Sir Edwin Lutyens

The house was comprehensively re-serviced and the complex roof was overhauled. The design included five bedrooms, and the sympathetic addition of windows to modernise the kitchen and breakfast area. There was also a new marble hall floor laid to an original Lutyens pattern.

